

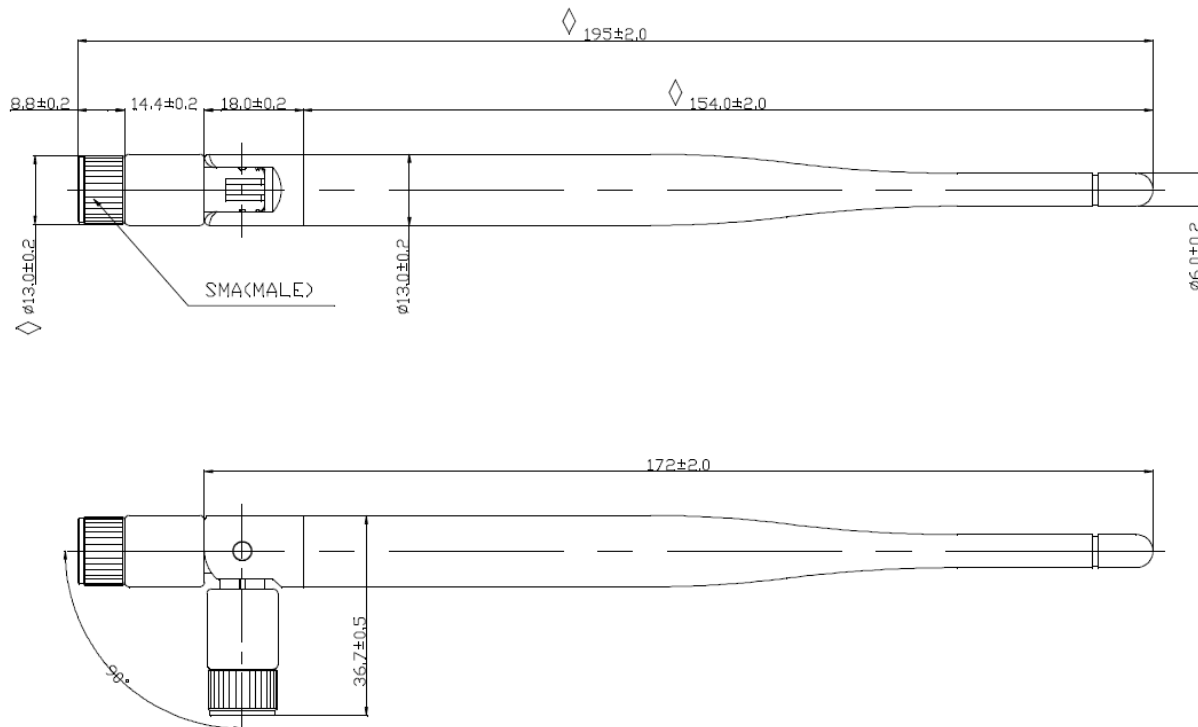


**DESCRIPTION WIFI ANTENNA**

**W1059**

**FREQUENCY 2400~2500MHz**

**Series : ANTENNA**



All dimensions are in mm

**Issue: 1545**

In the effort to improve our products, we reserve the right to make changes judged to be necessary.

**CONFIDENTIAL AND PROPRIETARY INFORMATION**

This document contains confidential and proprietary information of Pulse Electronics, Inc. (Pulse) and is protected by copyright, trade secret and other state and federal laws. Its receipt or possession does not convey any rights to reproduce, disclose its contents, or to manufacture, use or sell anything it may describe. Reproduction, disclosure or use without specific written authorization of Pulse is strictly forbidden

FM50039 Rev 0, 5/2/2013



**DESCRIPTION WIFI ANTENNA****W1059****FREQUENCY 2400~2500MHz****Series : ANTENNA****ELECTRICAL SPECIFICATIONS**

Frequency	2400~2500	MHz
Nominal Impedance	50	Ω
VSWR	<2	
Gain	5	dBi ± 1 dB
Radiation Pattern	Omni	
Vertical Plane	55	° ± 5 °
Polarization:	Vertical	
Connector type	SMA	MALE
Length	195	mm

**Issue: 1545**

In the effort to improve our products, we reserve the right to make changes judged to be necessary.

**CONFIDENTIAL AND PROPRIETARY INFORMATION**

This document contains confidential and proprietary information of Pulse Electronics, Inc. (Pulse) and is protected by copyright, trade secret and other state and federal laws. Its receipt or possession does not convey any rights to reproduce, disclose its contents, or to manufacture, use or sell anything it may describe. Reproduction, disclosure or use without specific written authorization of Pulse is strictly forbidden

FM50039 Rev 0, 5/2/2013





**DESCRIPTION WIFI ANTENNA**

**W1059**

**FREQUENCY 2400~2500MHz**

Series : **ANTENNA**

**MECHANICAL SPECIFICATIONS**

Plastic radome	TPEE
Color	BLACK
Weight	29.2 g

**ENVIRONMENTAL SPECIFICATIONS**

Operating temperature	-20/+65 °C
Storage temperature	-30/+75 °C

**Issue: 1545**

In the effort to improve our products, we reserve the right to make changes judged to be necessary.

**CONFIDENTIAL AND PROPRIETARY INFORMATION**

This document contains confidential and proprietary information of Pulse Electronics, Inc. (Pulse) and is protected by copyright, trade secret and other state and federal laws. Its receipt or possession does not convey any rights to reproduce, disclose its contents, or to manufacture, use or sell anything it may describe. Reproduction, disclosure or use without specific written authorization of Pulse is strictly forbidden

FM50039 Rev 0, 5/2/2013





**DESCRIPTION WIFI ANTENNA**

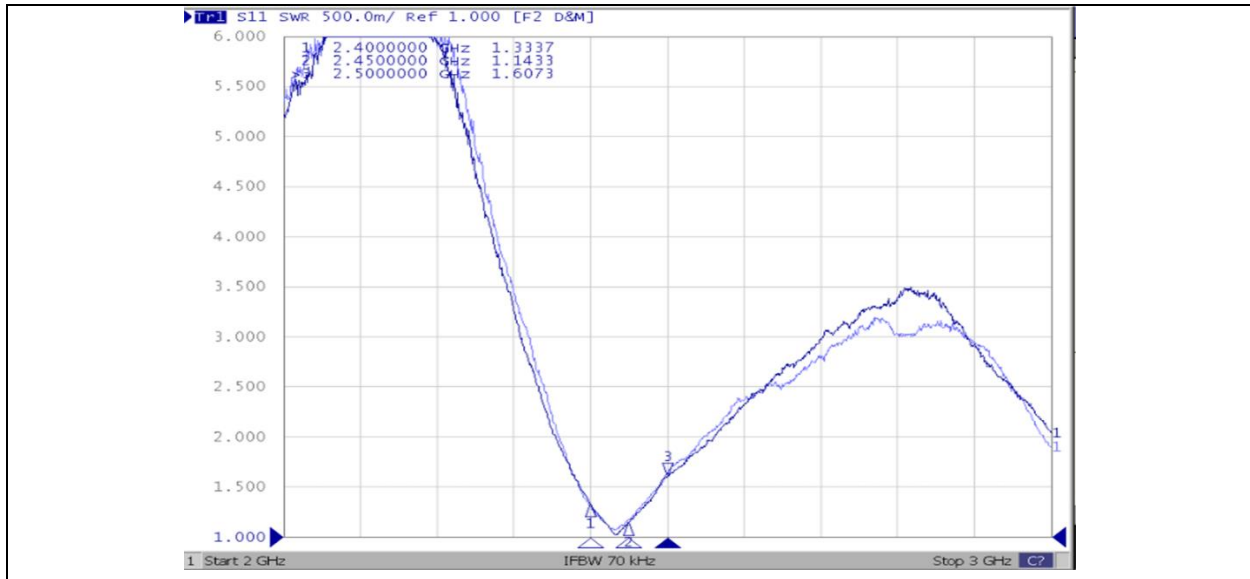
**W1059**

**FREQUENCY 2400~2500MHz**

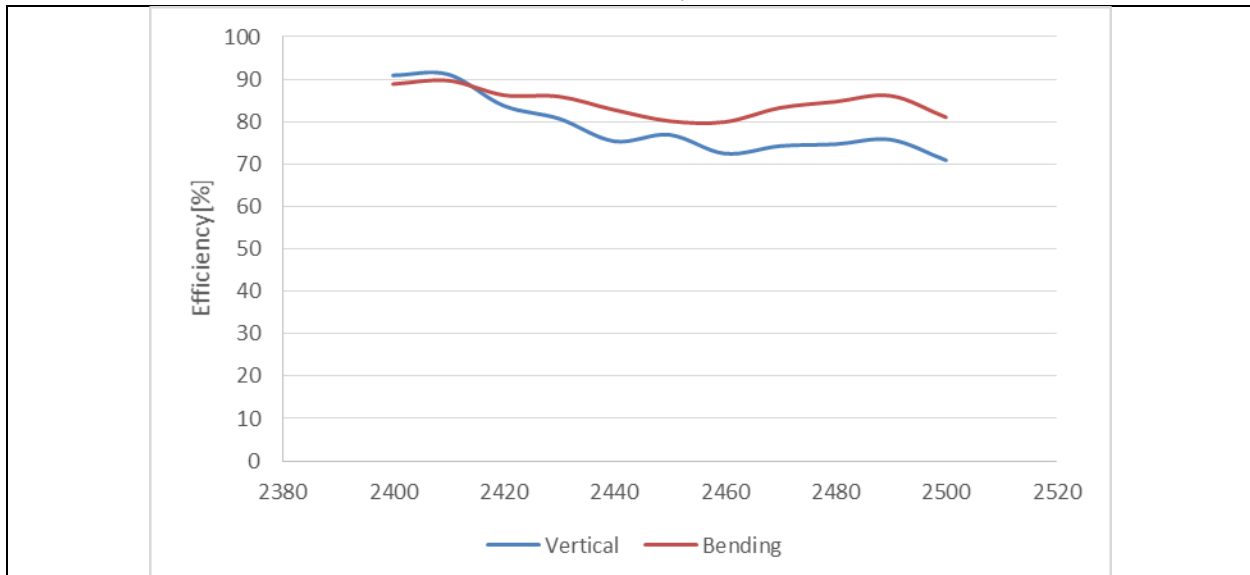
Series : **ANTENNA**

Charts

VSWR



Efficiency



**Issue: 1545**

In the effort to improve our products, we reserve the right to make changes judged to be necessary.

**CONFIDENTIAL AND PROPRIETARY INFORMATION**

This document contains confidential and proprietary information of Pulse Electronics, Inc. (Pulse) and is protected by copyright, trade secret and other state and federal laws. Its receipt or possession does not convey any rights to reproduce, disclose its contents, or to manufacture, use or sell anything it may describe. Reproduction, disclosure or use without specific written authorization of Pulse is strictly forbidden





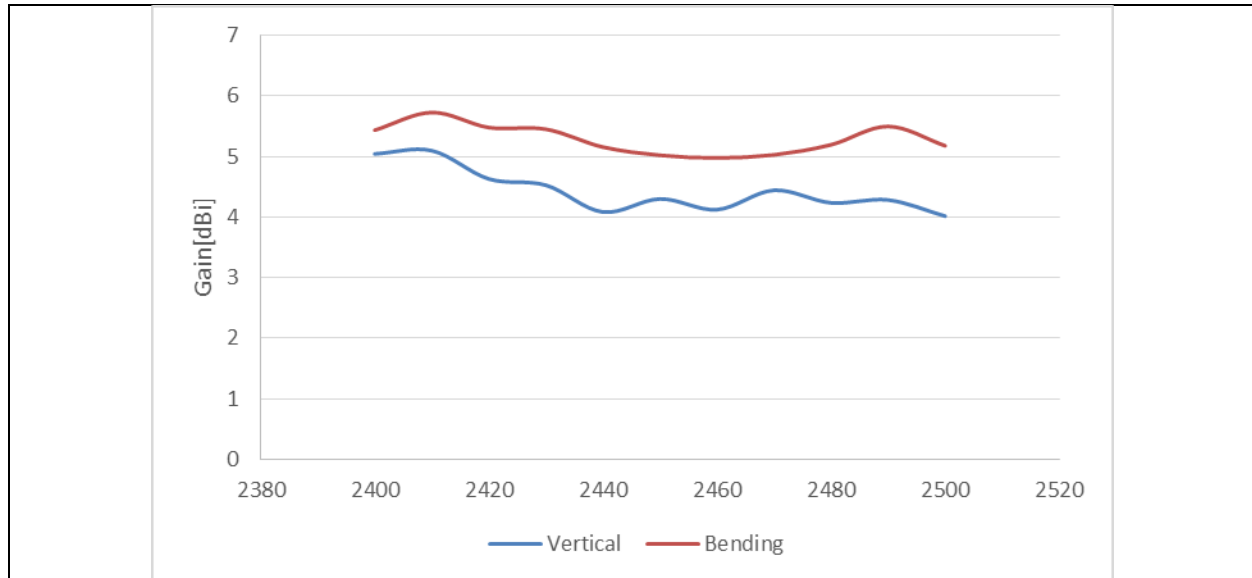
**DESCRIPTION WIFI ANTENNA**

**W1059**

**FREQUENCY 2400~2500MHz**

Series : **ANTENNA**

Gain



**Issue: 1545**

In the effort to improve our products, we reserve the right to make changes judged to be necessary.

**CONFIDENTIAL AND PROPRIETARY INFORMATION**

This document contains confidential and proprietary information of Pulse Electronics, Inc. (Pulse) and is protected by copyright, trade secret and other state and federal laws. Its receipt or possession does not convey any rights to reproduce, disclose its contents, or to manufacture, use or sell anything it may describe. Reproduction, disclosure or use without specific written authorization of Pulse is strictly forbidden

FM50039 Rev 0, 5/2/2013





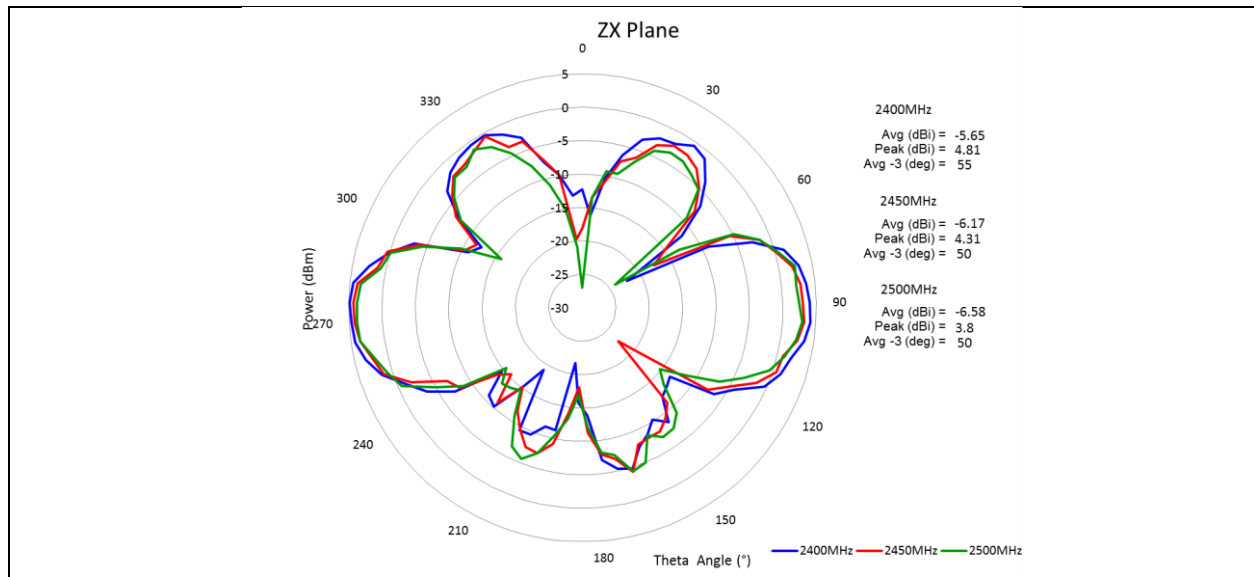
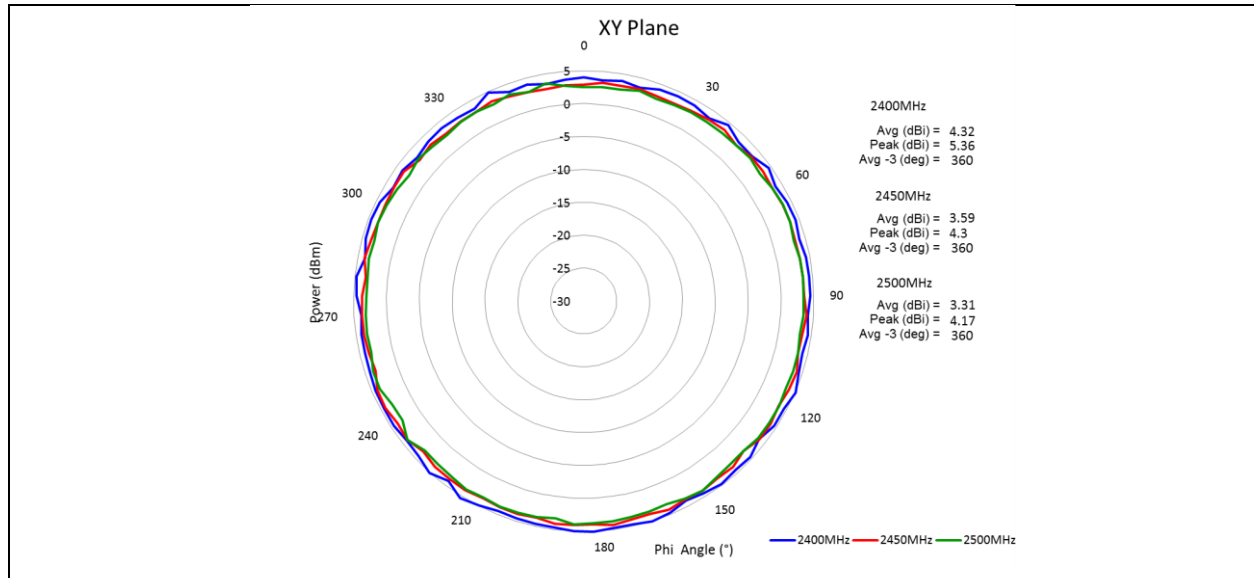
**DESCRIPTION WIFI ANTENNA**

**W1059**

**FREQUENCY 2400~2500MHz**

**Series : ANTENNA**

**Radiation Pattern**



**Issue: 1545**

In the effort to improve our products, we reserve the right to make changes judged to be necessary.

**CONFIDENTIAL AND PROPRIETARY INFORMATION**

This document contains confidential and proprietary information of Pulse Electronics, Inc. (Pulse) and is protected by copyright, trade secret and other state and federal laws. Its receipt or possession does not convey any rights to reproduce, disclose its contents, or to manufacture, use or sell anything it may describe. Reproduction, disclosure or use without specific written authorization of Pulse is strictly forbidden

