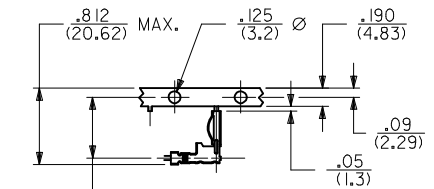
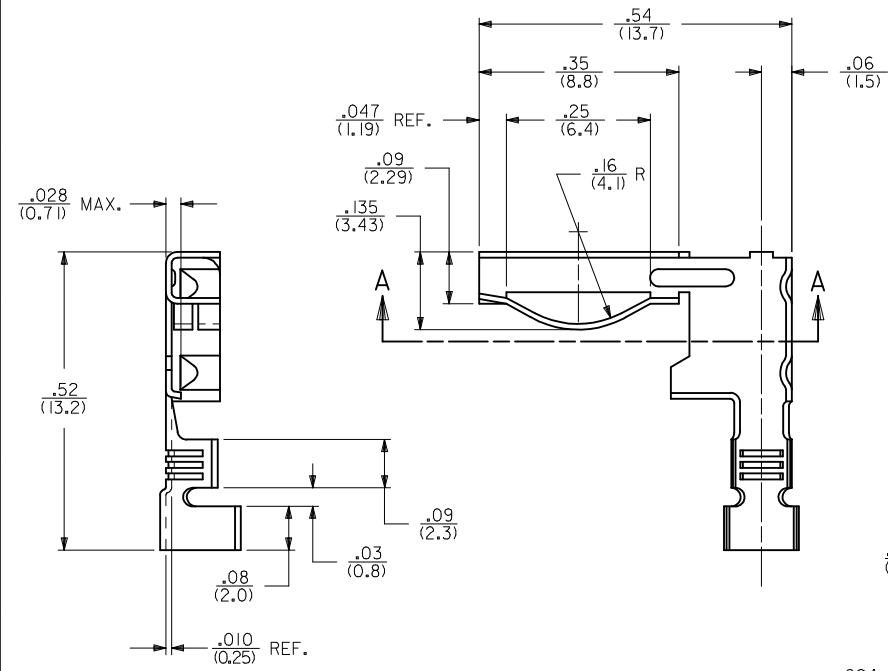


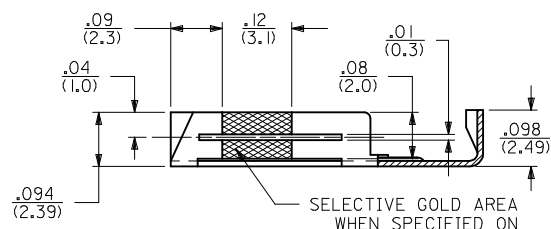
13	12	11	10	9	8	7	6	5	4	3	2	1
PART NO.	PACKED	MATERIAL	FINISH	WIRE RANGE AWG.	INS. DIA. RANGE	C	D	E	F	ENG. NO.	REMARKS	
08-35-0105	CHAIN	70/30 BRASS .010/(0.25) THICK	.00002/(0.0005) MIN. GOLD PLATE OVER .00003/(0.0008) MIN. NICKEL PLATE	#18-#24 CU. STR.	0.060/0.120 (1.52/3.05)	0.130±.030 (3.30±0.76)	0.140±.015 (3.56±0.38)	0.105±.020 (2.67±0.51)	0.088±.015 (2.24±0.38)	1799-MAG	GOLD OVERALL	OBSELETE
08-34-0105	CHAIN	70/30 BRASS .010/(0.25) THICK	.00002/(0.0005) MIN. GOLD PLATE OVER .00003/(0.0008) MIN. NICKEL PLATE PER ENG. STD. NO. 41.							1799-MAG I	SELECTIVE GOLD	
08-30-0109	CHAIN	70/30 BRASS .010/(0.25) THICK	TIN PLATED							1799-MAT		



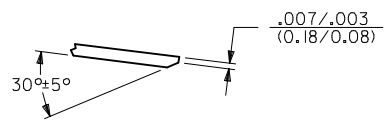
CARRIER STRIP DETAIL
ACTUAL SIZE

NOTES:

1. MATERIAL: SEE CHART
2. FINISH: SEE CHART
3. PRODUCT SPECIFICATION: NONE
4. REEL WINDING PER ES-339 "A" WINDING.
5. WIRE STRIP LENGTH TO BE .140/(3.56)
6. MAXIMUM VOLTAGE: 250 VAC (NOT CONSIDERING PCB) CURRENT RATING DEPENDS ON MATING PCB. UP TO 7.0 AMPS MAXIMUM PER CIRCUIT IS POSSIBLE UNDER IDEAL CONDITIONS.
7. PARTS CONFORM TO CLASS B REQUIREMENTS OF COSMETIC SPECIFICATION PS-45499-002.

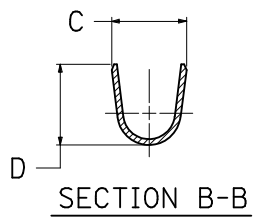


SECTION A-A

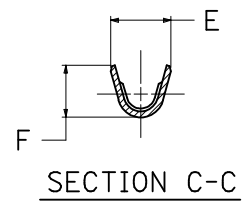


COIN DETAIL

SCALE 12:1
TYP. FOR BOTH CONDUCTOR AND INSULATOR CRIMPS
1799-M SERIES ONLY



SECTION B-B



SECTION C-C

OBSELETE #08-35-0105 EC NO: UCP2013-0293 DRW:NAELHAG 2012/07/23 CHKD: APPR:FSMITH 2012/09/11 M2	QUALITY SYMBOLS ▽=0 ▽=0	GENERAL TOLERANCES (UNLESS SPECIFIED)		DIMENSION STYLE IN/MM		SCALE 6:1	DESIGN UNITS INCH	THIRD ANGLE PROJECTION		
		4 PLACES ± --- ± ---	3 PLACES ± --- ± .010	DRAWN BY MAB	DATE 1992/06/05	TITLE TERMINAL - RIGHT ANGLE MODIFIED FOR EDGE CONNECTORS				
		2 PLACES ± .025 ± .015	1 PLACE ± .038 ± ---	CHECKED BY ESS	DATE 1992/06/05	APPROVED BY RAS		DATE 1992/06/05	MOLEX INCORPORATED	
		ANGULAR ± 1/2°		MATERIAL NO. SEE CHART		DOCUMENT NO. SD-1799-MA	SHEET NO. 1 OF 1			
DRAFT WHERE APPLICABLE MUST REMAIN WITHIN DIMENSIONS				THIS DRAWING CONTAINS INFORMATION THAT IS PROPRIETARY TO MOLEX INCORPORATED AND SHOULD NOT BE USED WITHOUT WRITTEN PERMISSION						