

# EMG 30-NZG/G24/SI


Order No.: 2943932



<http://eshop.phoenixcontact.de/phoenix/treeViewClick.do?UID=2943932>

Voltage regulator module with fixed-voltage regulator, input 24 V-29 V AC/ 28 V-38 V DC, output 24 V DC/0.5 A



Commercial data	
GTIN (EAN)	 4 017918 081409
sales group	H043
Pack	1 pcs.
Customs tariff	85044082

### Product notes

WEEE/RoHS-compliant since:  
04/02/2007



<http://www.download.phoenixcontact.com>  
Please note that the data given here has been taken from the online catalog. For comprehensive information and data, please refer to the user documentation. The General Terms and Conditions of Use apply to Internet downloads.

### Technical data

#### Input data

Nominal input voltage	27 V AC 5%
AC frequency range	60 Hz ... 50 Hz

Nominal power consumption	Approx. 20 VA
Input fuse	0.63 A (normal-blow (5 x 20))

#### Output data

Nominal output voltage	24 V DC $\pm 4\%$
Output current	0.5 A
Residual ripple	$\leq 60 \text{ mV}_{\text{PP}}$
Type of protection	Thermo-electronic disconnect
Protective circuit/component	Varistor

#### General data

Width	32 mm
Height	67.1 mm
Depth	75 mm
Net weight	115 g
Operating voltage display	Green LED
Operating mode	100% operating factor
Degree of protection	IP20
Ambient temperature (operation)	0 °C ... 55 °C
Mounting position	Vertical, horizontal
Assembly instructions	Can be aligned with spacing = 5 mm

#### Connection data, input

Type of connection	Screw connection
Conductor cross section solid min.	0.2 mm <sup>2</sup>
Conductor cross section solid max.	4 mm <sup>2</sup>
Conductor cross section stranded min.	0.2 mm <sup>2</sup>
Conductor cross section stranded max.	2.5 mm <sup>2</sup>
Conductor cross section AWG/kcmil min.	24
Conductor cross section AWG/kcmil max	14
Stripping length	8 mm
Screw thread	M3

#### Connection data, output

Type of connection	Screw connection
Conductor cross section solid min.	0.2 mm <sup>2</sup>
Conductor cross section solid max.	4 mm <sup>2</sup>

Conductor cross section stranded min.	0.2 mm <sup>2</sup>
Conductor cross section stranded max.	2.5 mm <sup>2</sup>
Conductor cross section AWG/kcmil min.	24
Conductor cross section AWG/kcmil max	14
Stripping length	8 mm

**Certificates / Approvals**



Certification GOST

**Accessories**

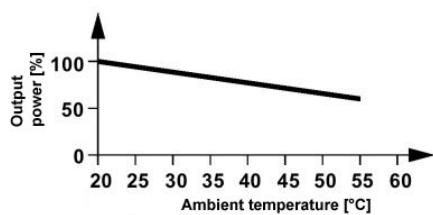
Item	Designation	Description
------	-------------	-------------

**Marking**

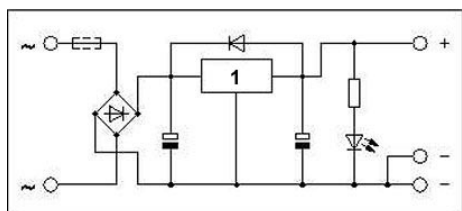
2947035	EMG-GKS 12	Equipment marker, width 12 mm
---------	------------	-------------------------------

**Diagrams/Drawings**

Diagram



Circuit diagram



1 = regulator

**Address**

PHOENIX CONTACT Deutschland GmbH  
Flachmarktstr. 8  
32825 Blomberg, Germany  
Phone +49 5235 3 12000  
Fax +49 5235 3 41200  
<http://www.phoenixcontact.de>



© 2011 Phoenix Contact  
Technical modifications reserved;