

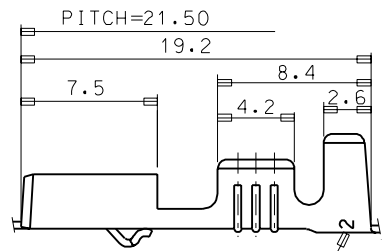
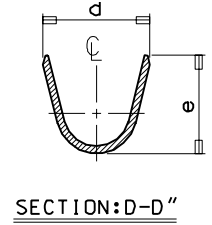
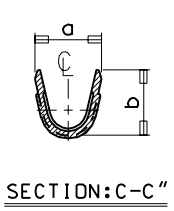
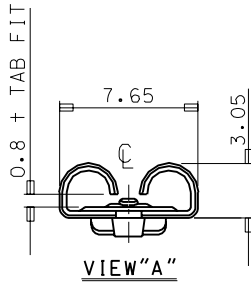
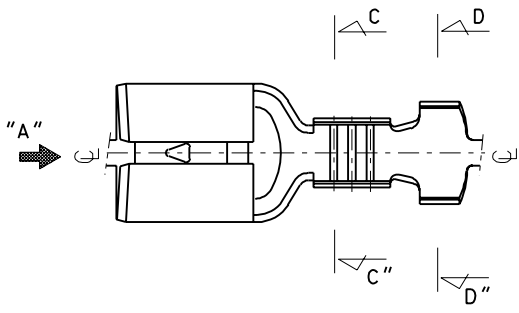
ENG. NO

EDP NO.

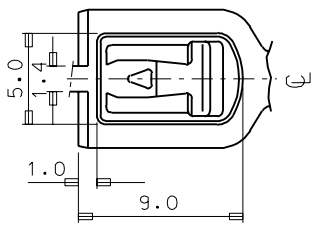
SIMILAR ITEM

PROJECT NO.

DO NOT SCALE DRAWING
DIMENSION IN METRIC



TRADE MARK
MK2



ENG.NO.	a	b	d	e	WIRE RANGE	INS. DIA.	Q' TY/REEL
35725-4510	2.7	3.0	4.6	4.4	AWG #22-#18	1.5-3.0	5,000
35725-4610	3.7	3.6	5.8	5.8	AWG #18-#14	2.2-3.6	5,000
35725-4710	5.9	5.2	7.5	6.2	AWG #14-#10	2.8-5.0	4,000

NOTES

1. MATERIAL: BRASS 0.40 THICKNESS
2. FINISH: PRE-TIN PLATING
3. MATING TAB THICKNESS: 0.8
4. RECOMMENDED LENGTH OF WIRE STRIP IS 5.5-6.0

ASS'Y PART		QTY/REEL OR PACK	SURFACE AREA	MATERIAL	WIRE RANGE	GENERAL TOLERANCES	MOLEX MOLEX-KOREA CO.,LTD.			
DESCRIPTION	ENG.NO.							MM ²	AWG:	DIM. ±0.30
		---	---	---	MM ² :	ANGLE :	REVISE ONLY ON CAD SYSTEM			
		DIE NO. ---	LAYOUT NO. ---	<input checked="" type="checkbox"/> : CRITICAL <input type="checkbox"/> : MINOR () : REFERENCE	INSULATION RANGE	TITLE: .250 SAFE LOCK RECEPTACLE	1 of 1			
		WIRE CRIMP WIDTH	INS. CRIMP WIDTH	DRAWN BY W. Y. YANG	CHK'D BY B. K. CHOI	ENG. NO. SD35725-4510/4610/4710	REV B			
LTR	REVISION RECORD	ECN	DR/CHK	DATE	DIE FEED 21.5	APPL FEED 21.5	WBDW ---	IBDW ---	APP'D BY	SCALE 4:1